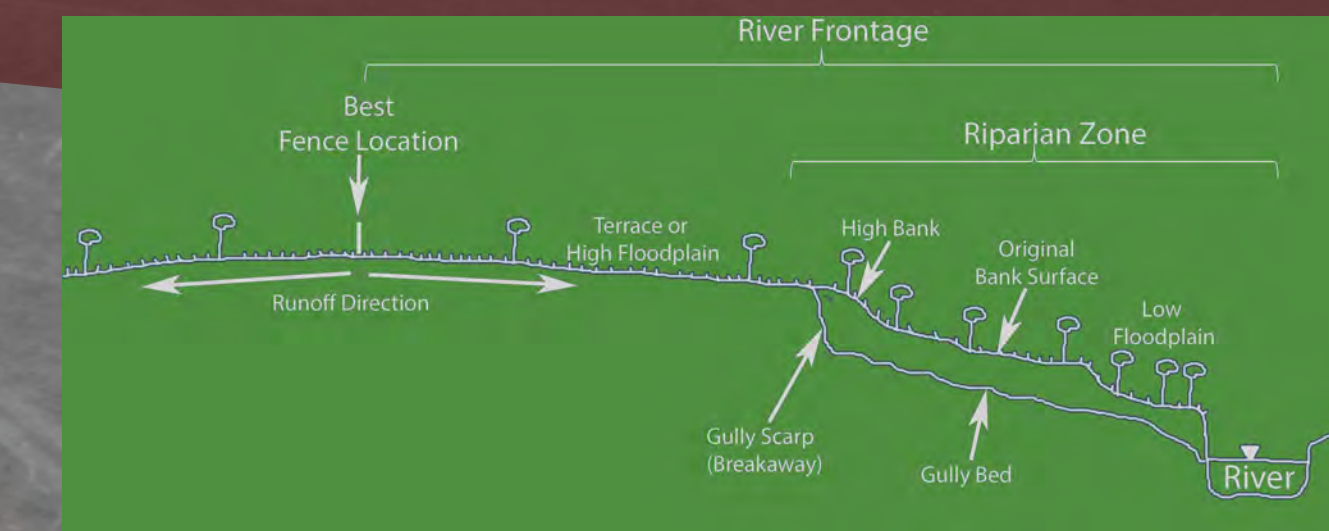


Rehabilitation of alluvial gully erosion along river frontages

Preventing and Reducing 'Breakaways'

Fence river frontage away from high banks

- Full cattle exclusion or wet season spelling



Install water diversion/retention banks above gully heads

- Divert excess water to safe disposal areas

Stop erosion drivers

1. Reduce Water Runoff Into Gullies

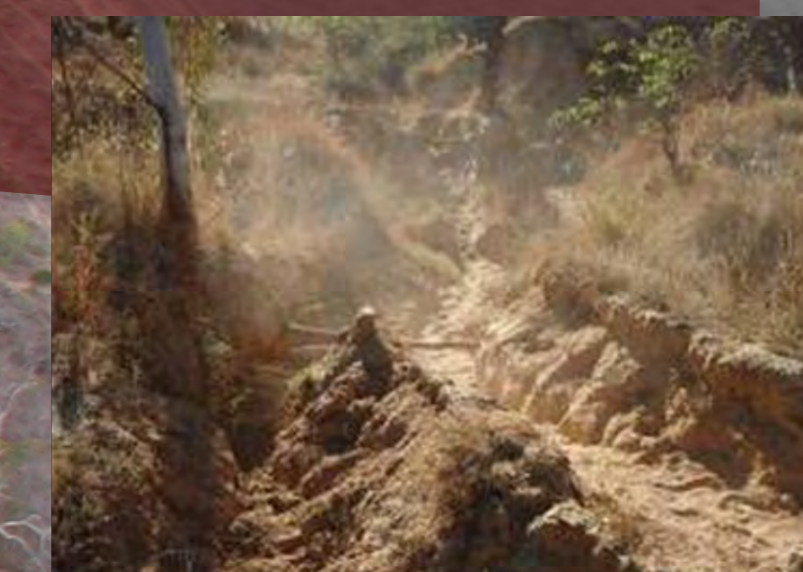
Build erosion resistance

2. Increase Vegetation in Gullies

3. Reduce Slope (Grade) of Gully Channels

Reduce cattle pads over steep banks

- Reduce water concentration



Install grade control structures

- Only at narrow gully outlets or finger headcuts

Increase perennial grass cover on river flats

- Cover Target: >75% at BOS

>1000 kg/ha

- Reduce water runoff



Fire management in river frontage

- Cool winter fires (3-5 yrs), infrequent hot fires



Active rehabilitation of gully slopes

- Re-grade gully slopes with machinery
- Apply gypsum to soils with high sodium content
- Add compost or mulch for soil protection
- Add fertilizer or compost for plant nutrients
- Sow gully with perennial grass (native or exotic)

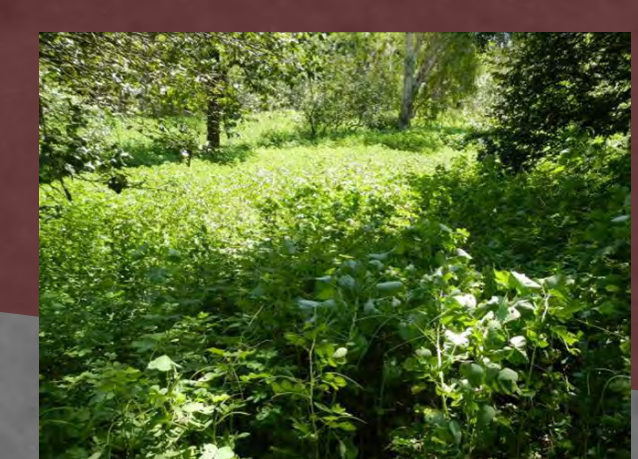


Increase grass cover in gullies

- Fence out cattle
- Aerial, hand or spray grass seed in the wet season



Weed management and control



Rehabilitation of alluvial gully erosion (breakaways) along river frontages

More info: **Dr Jeff Shellberg**, Australian Rivers Institute [j.shellberg@griffith.edu.au]



Sediment Sources, Sinks & Drivers on the Cape York Savannah

