



Slide 1



In-channel benches are storing in excess of 400 kt of fine sediment per year

2



The role of in-channel benches as major stores of suspended sediment in the Normanby catchment & implications for catchment management

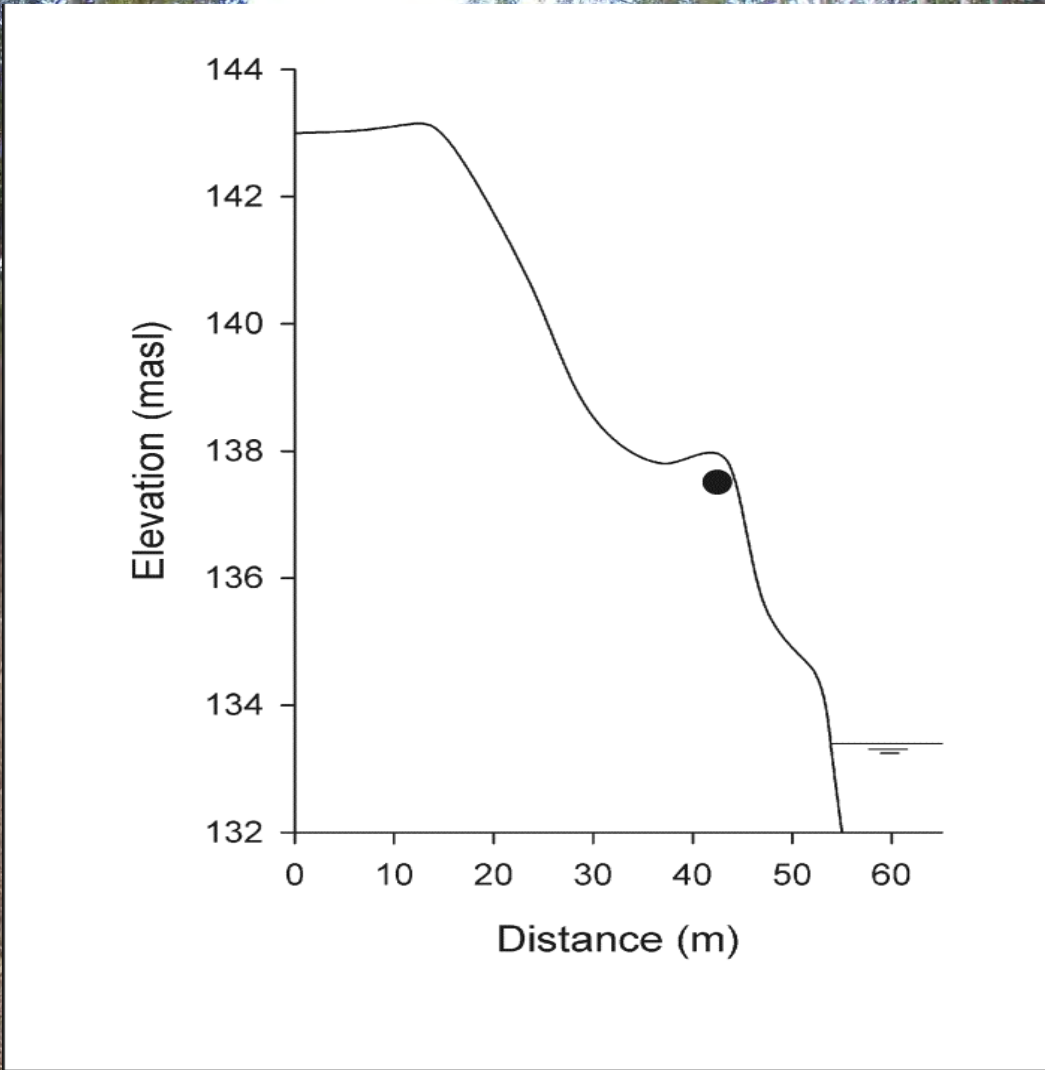
Pietsch, T., Brooks, A., Spencer, J., Olley, J., Borombovits, D.

**Sediment Sinks Sources & Drivers
in the Normanby Basin**



CAPE YORK WATER QUALITY







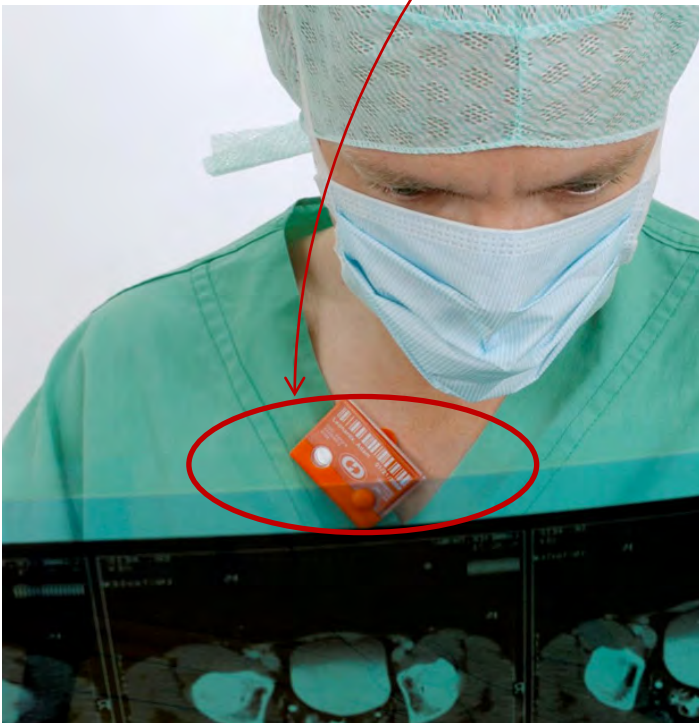


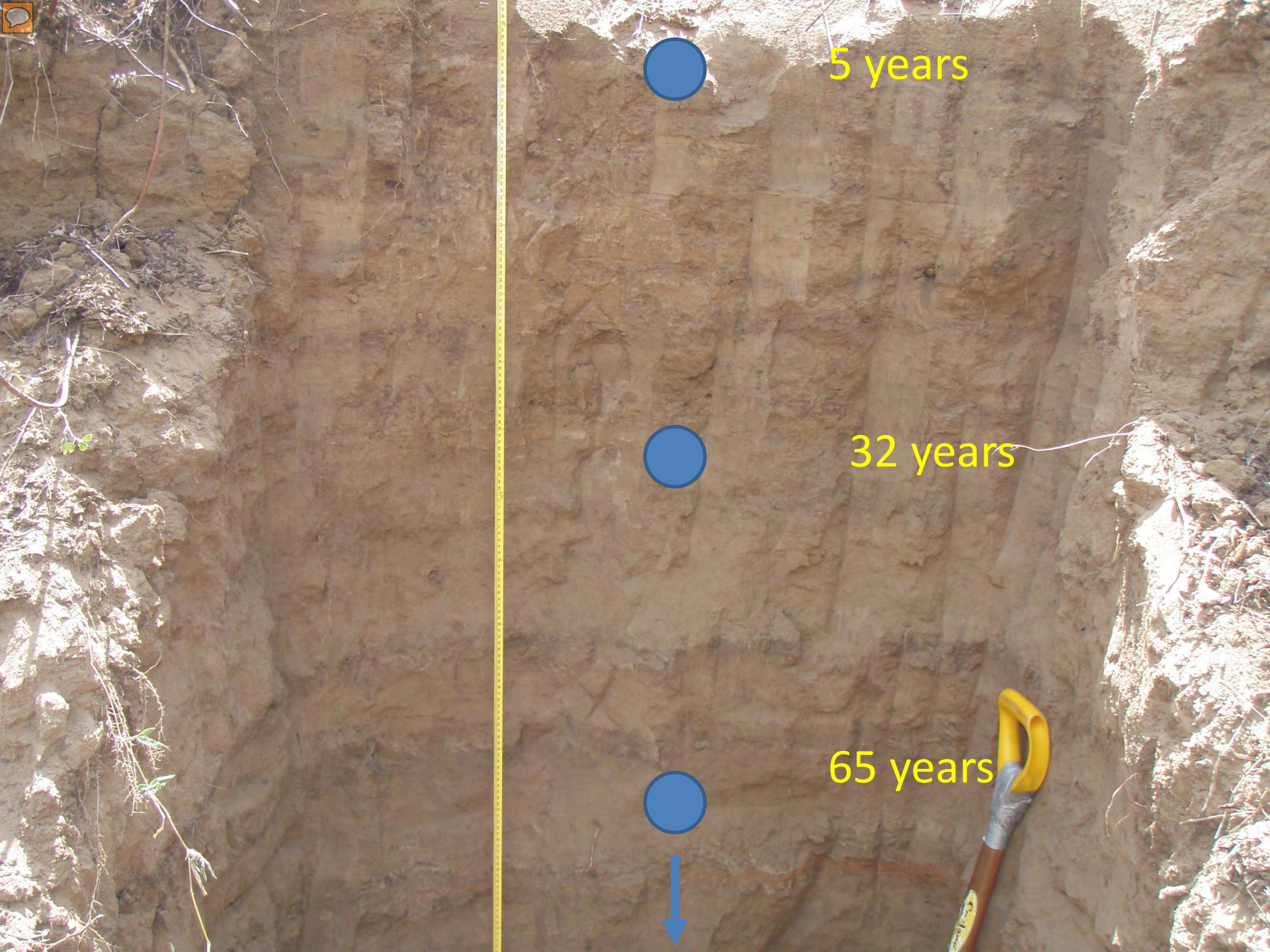


OSL

Dose

Dose Rate





5 years

32 years

65 years





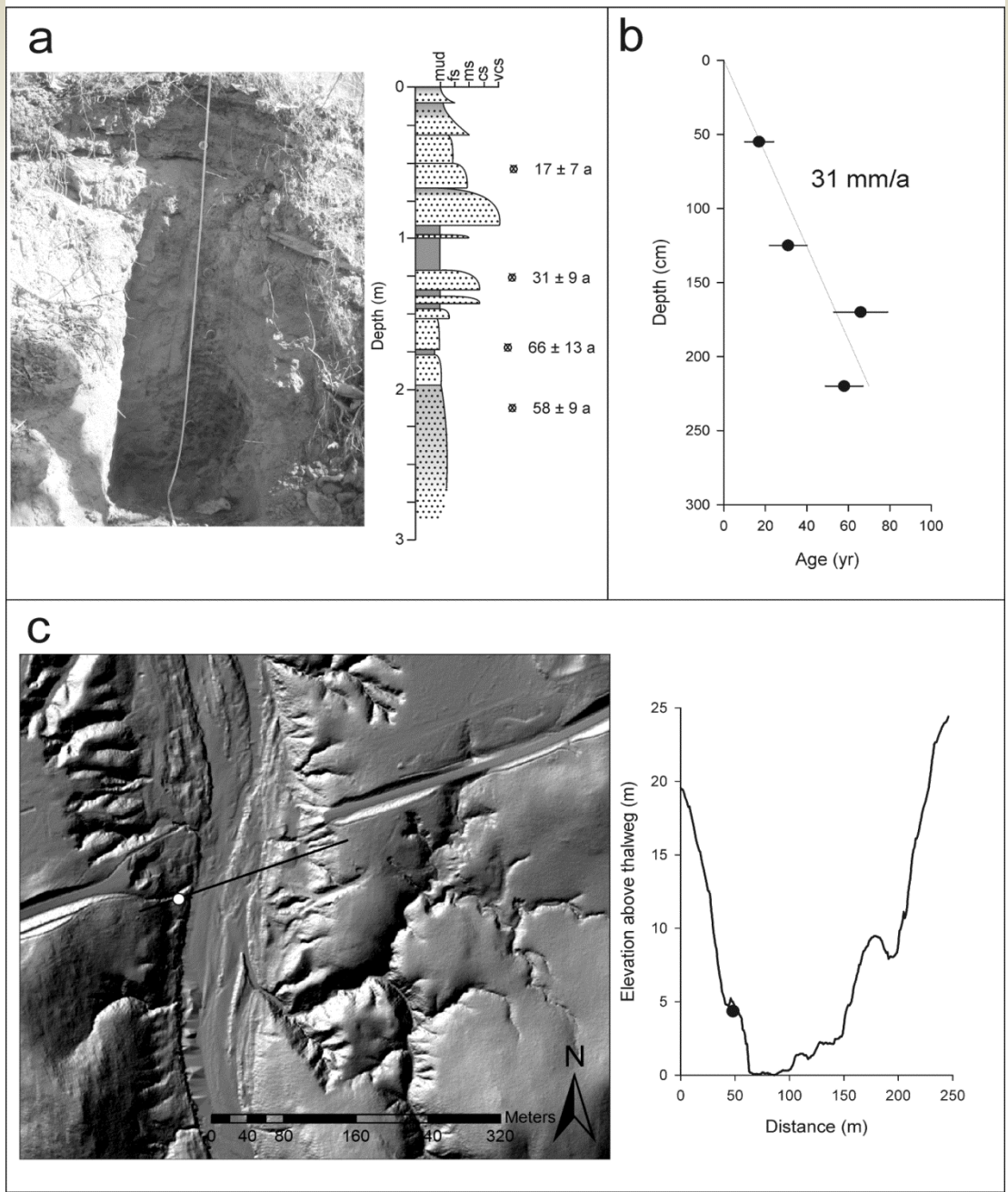


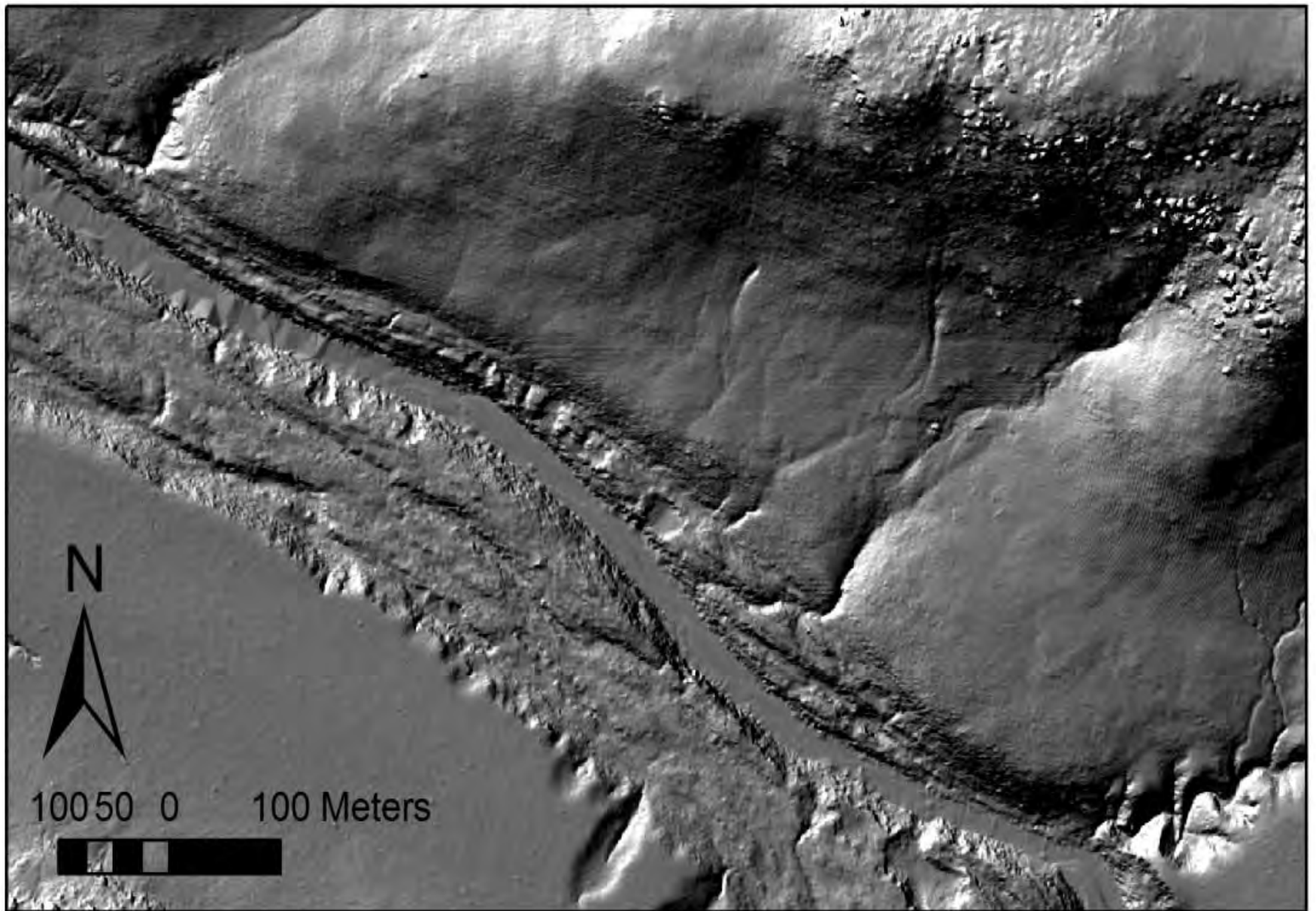




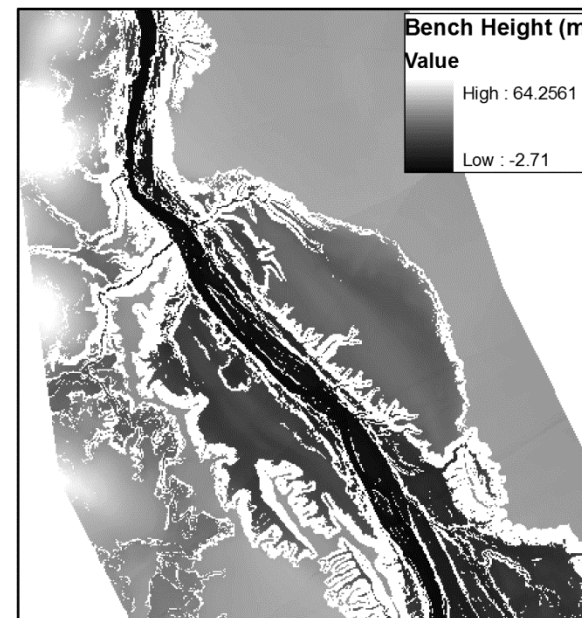
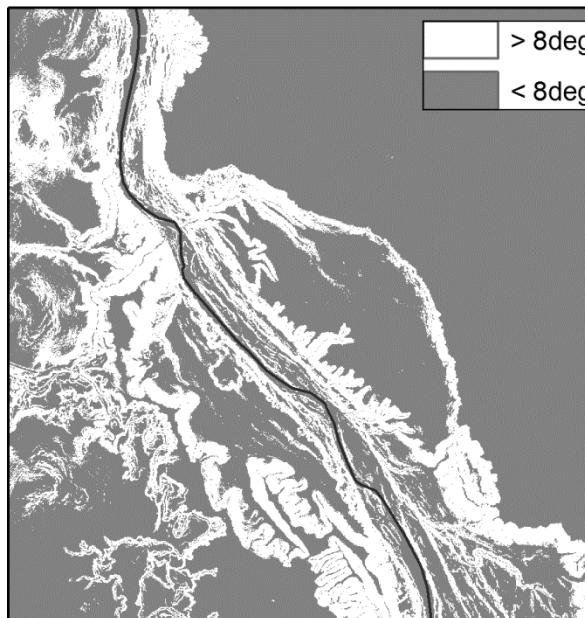
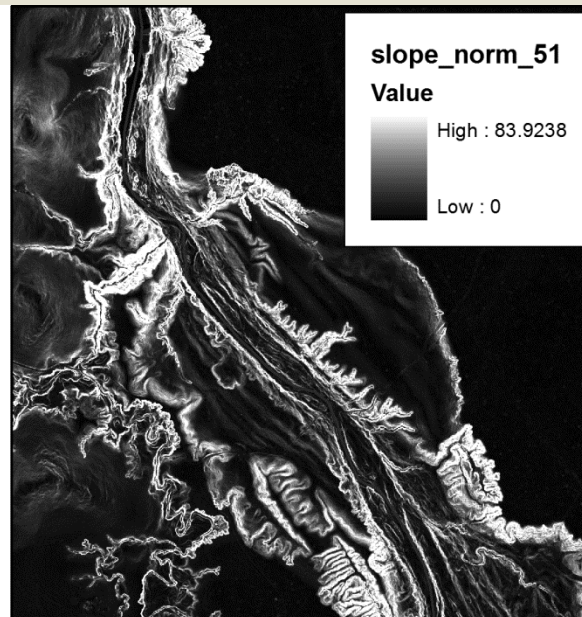
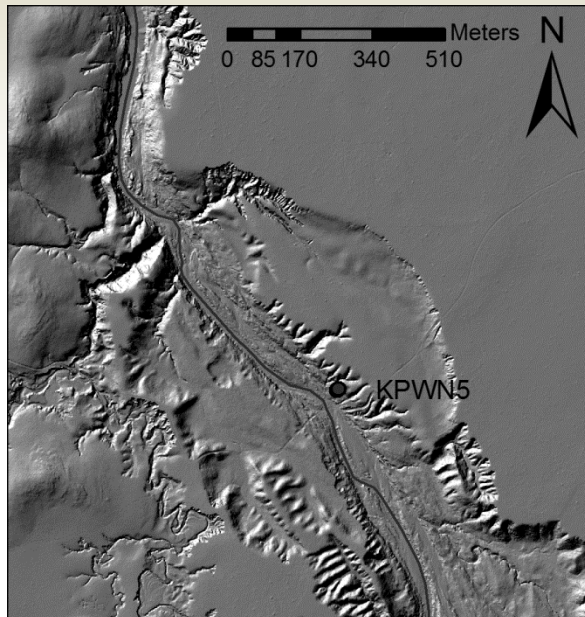


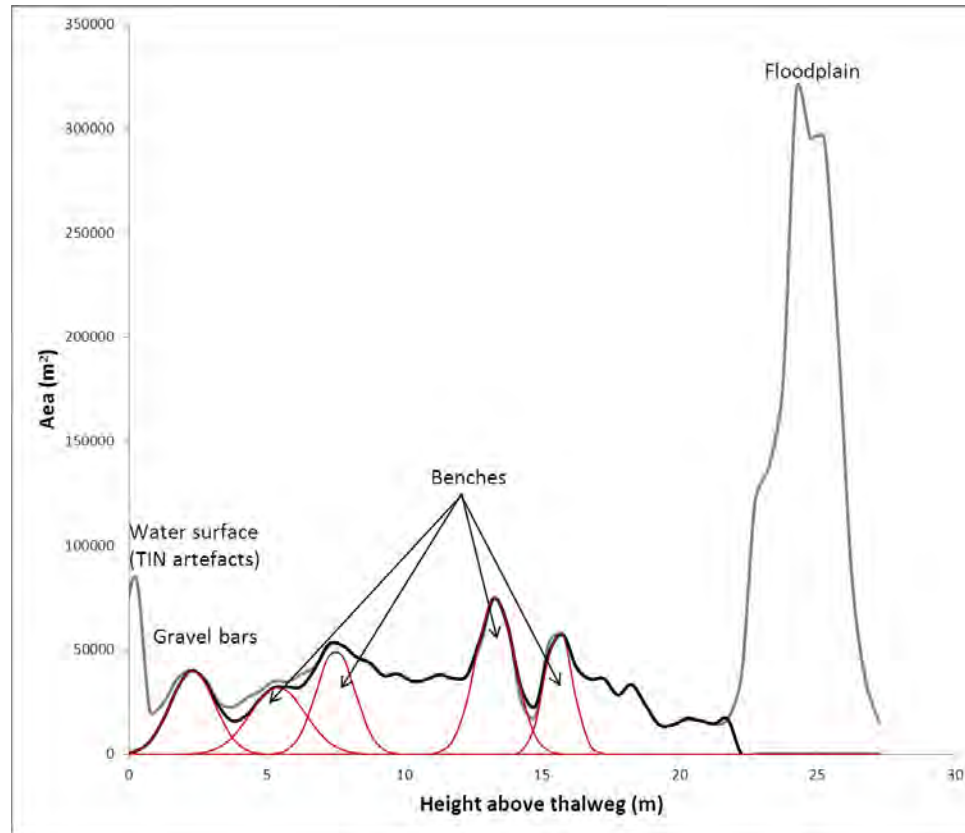


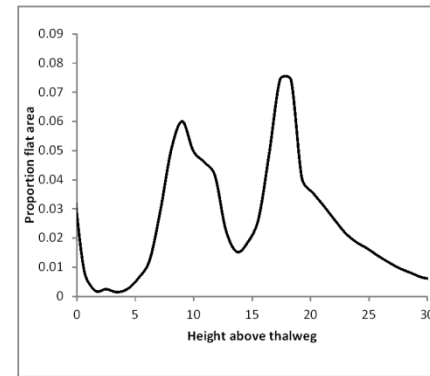
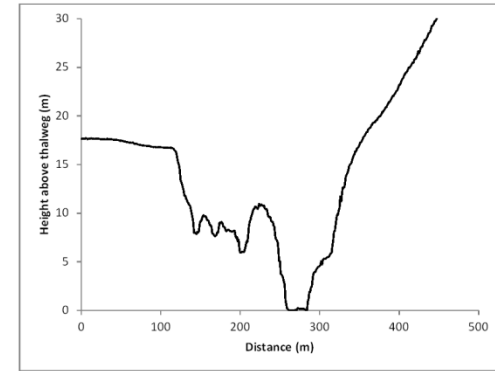
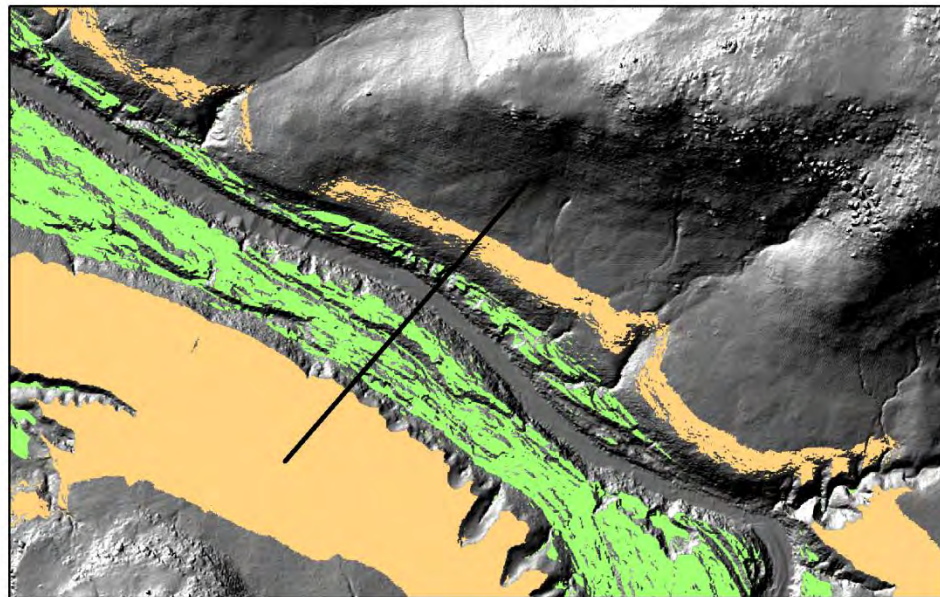
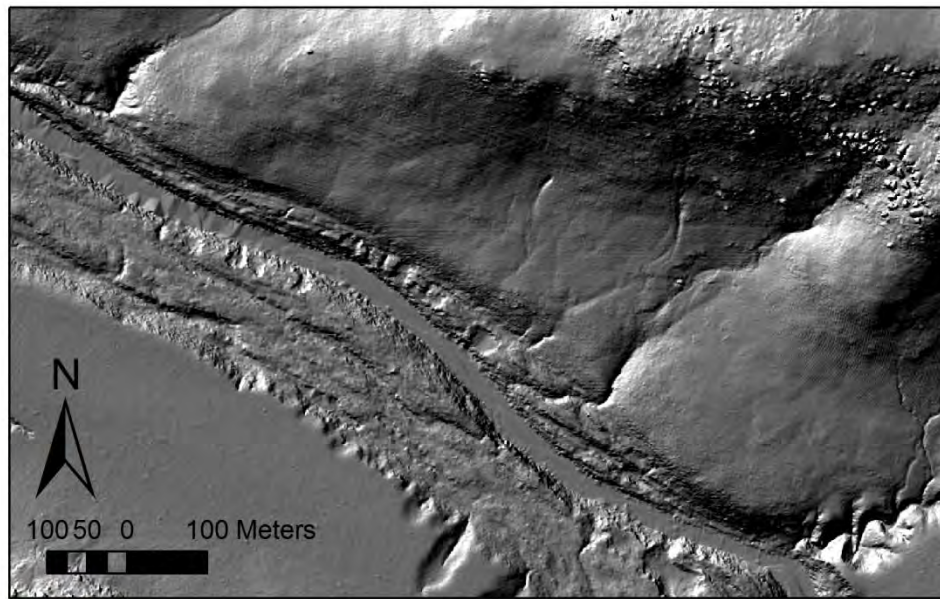




1 The role of in-channel benches as major stores of suspended sediment in the Normanby
6 catchment & implications for catchment management

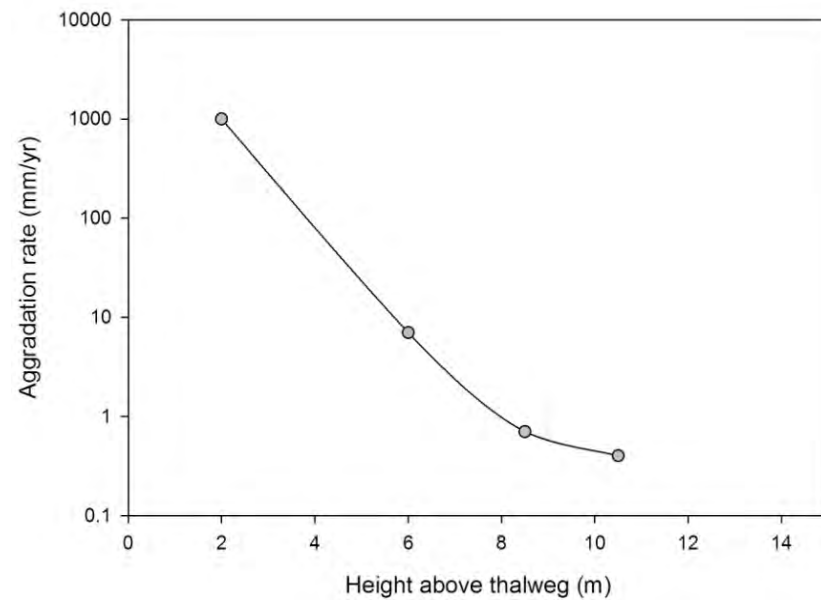
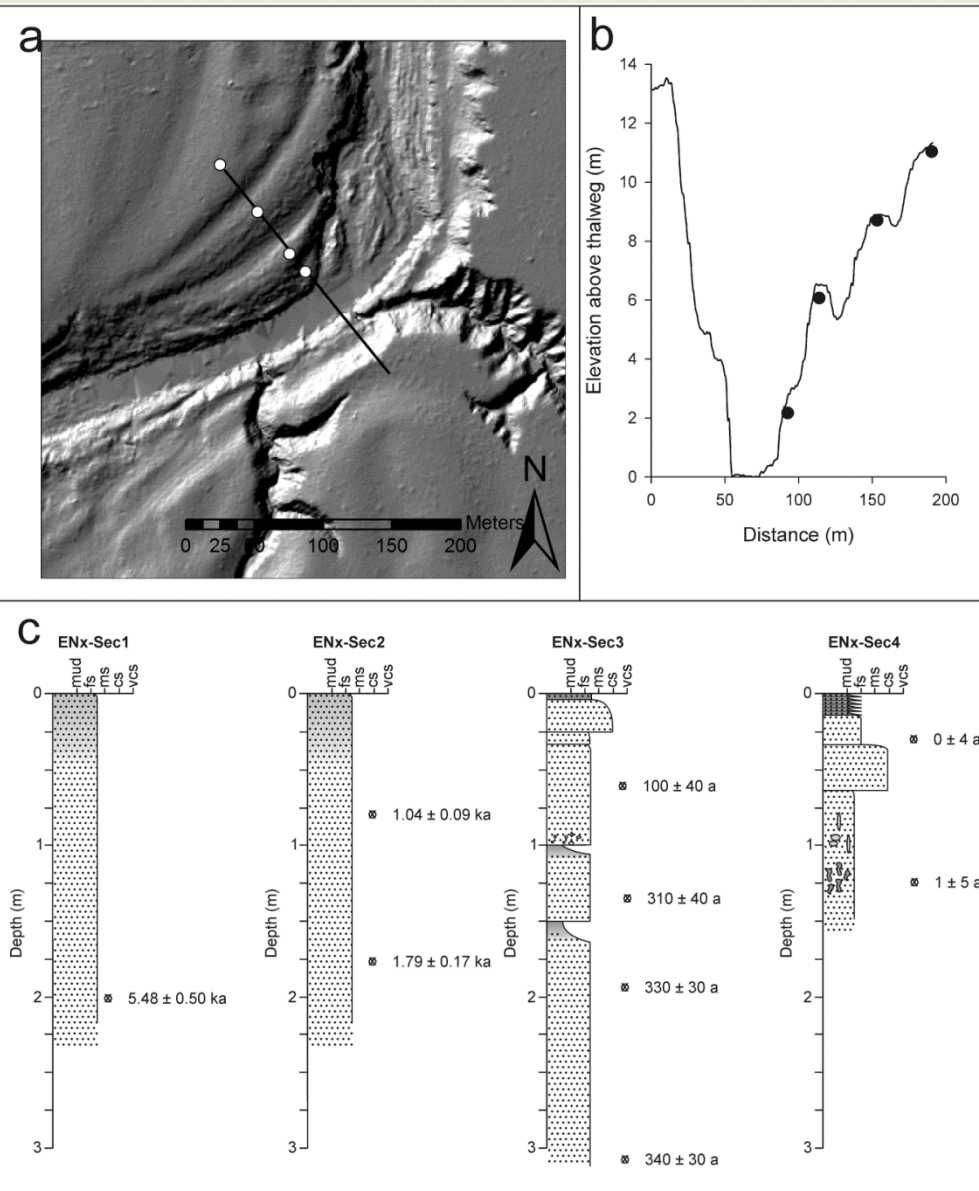






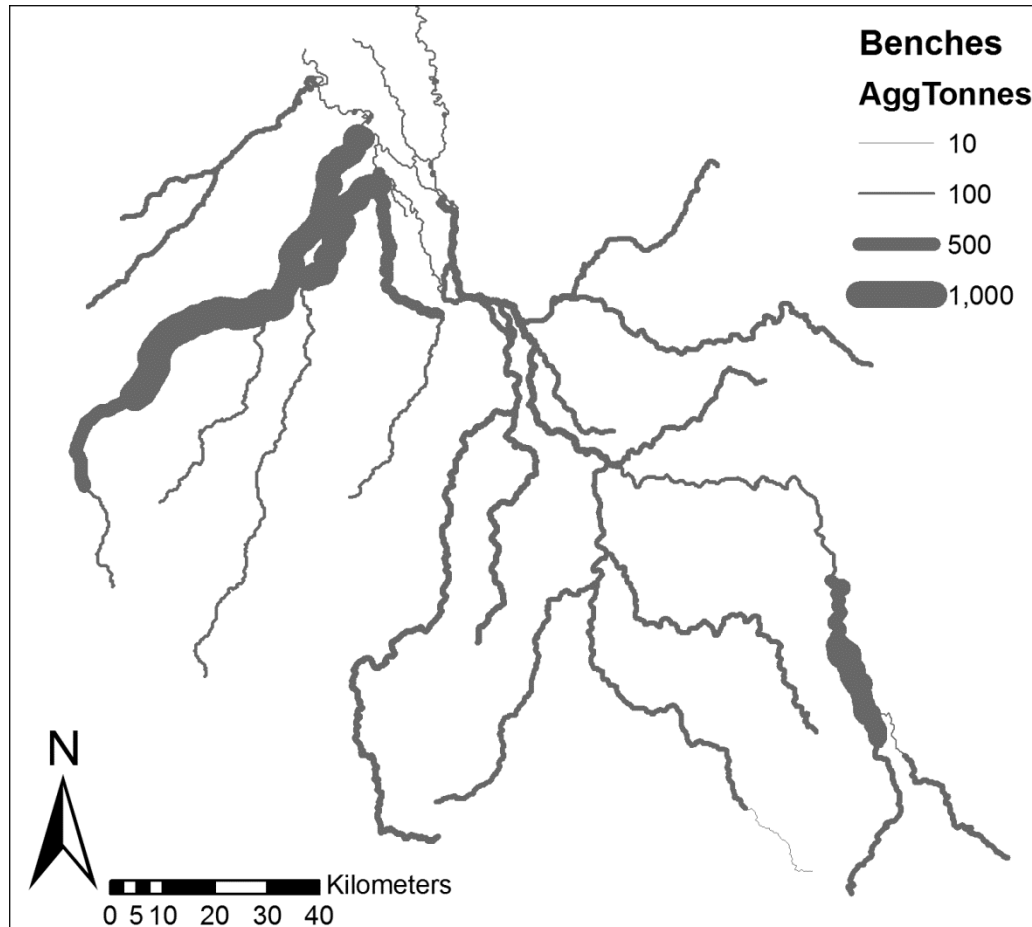
1 The role of in-channel benches as major stores of suspended sediment in the Normanby
9 catchment & implications for catchment management





Profile	Contemporary Aggradation Rate (mm/yr)	Period represented (years to present)	% Fines
Benches			
West Normanby	31	60	23
Battlecamp crossing	10	110	28
KPWNS	2.3	650	55
Lower Kalpower	13	150	16
Carols Crossing	23	60	50
Average	16		
East Normanby			
Point Bar	1000	2	38
Scroll 1	7	100	14
Scroll 2	0.7	1000	25
Scroll 3	0.4	5500	25
Coastal Floodplain			
NKCP1	0	500	95
NKCP2+3	0	570	95
Average	0		
Proximal Floodplains			
Kalpower Upper Surface	1	1000	45
Bizant Gully	0-0.3	2500	85
Bizant River	0.8	2200	85
IBA16	<0.2	2500	10
NSVF1	0.5	1000	30
MRFP	0.2	4800	25
NRFP	0.25	400	90
Average	0.37		

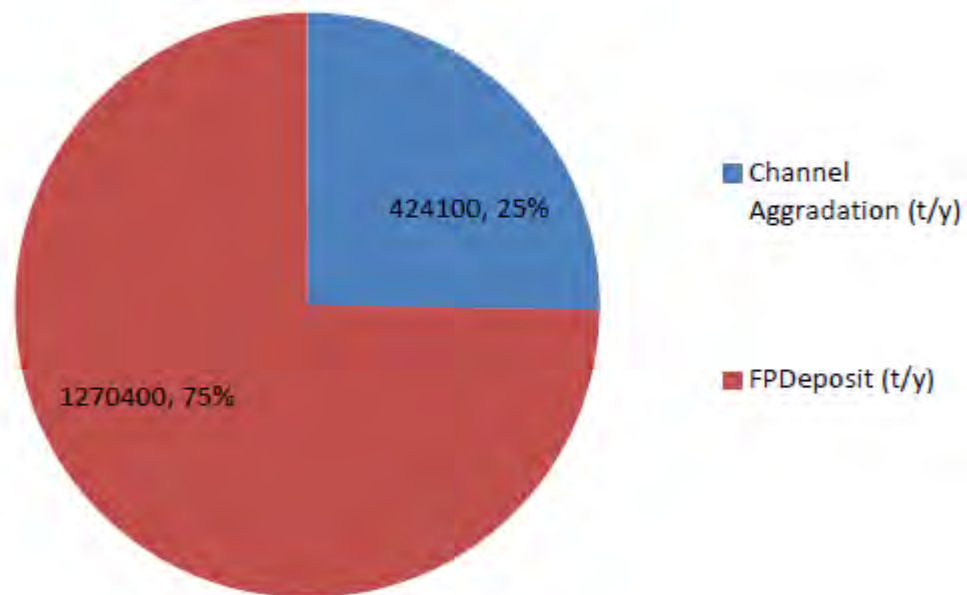
2 The role of in-channel benches as major stores of suspended sediment in the Normanby catchment & implications for catchment management

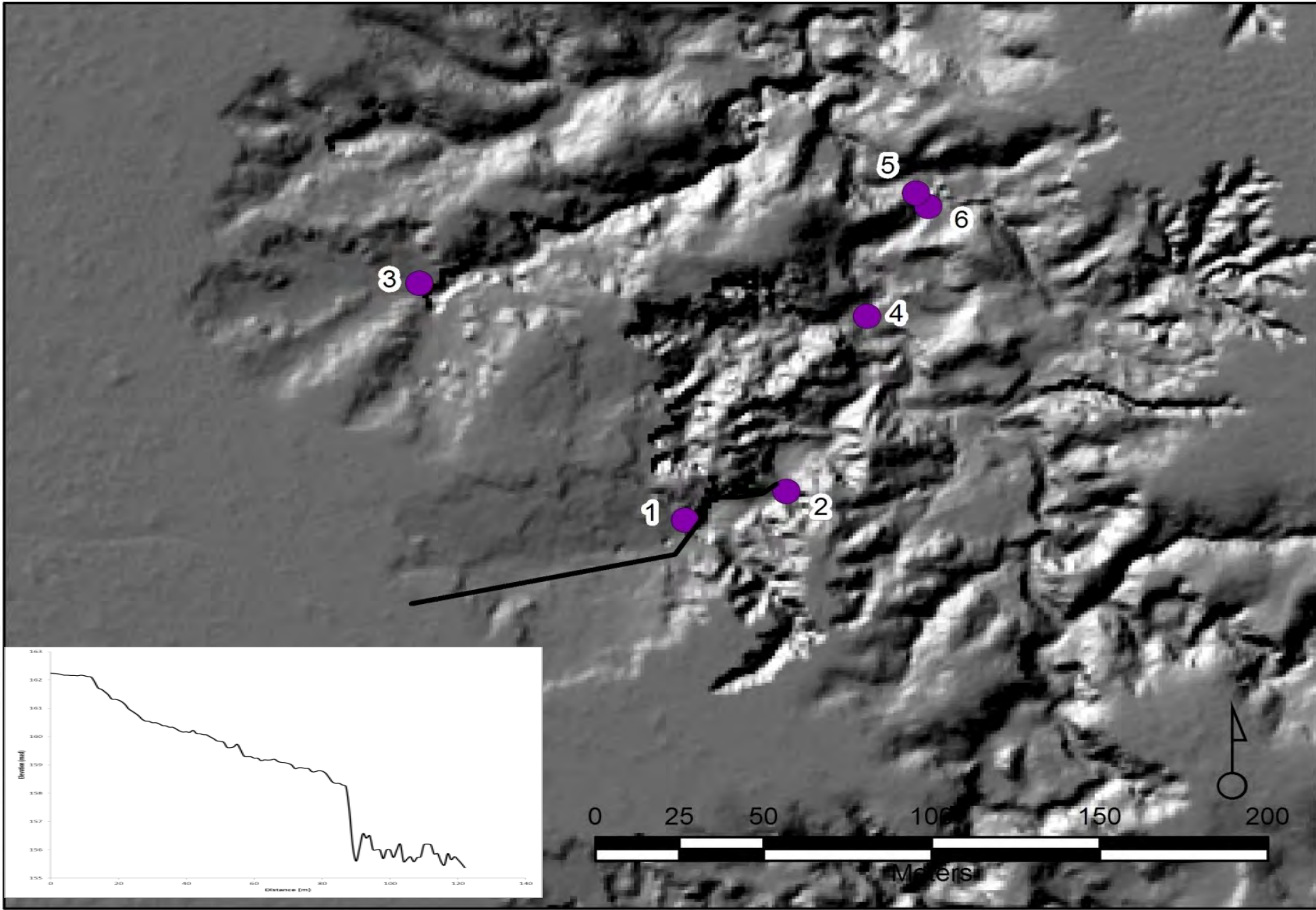


- 2 The role of in-channel benches as major stores of suspended sediment in the Normanby catchment & implications for catchment management
- 3



Normanby Suspended Sediment Storage

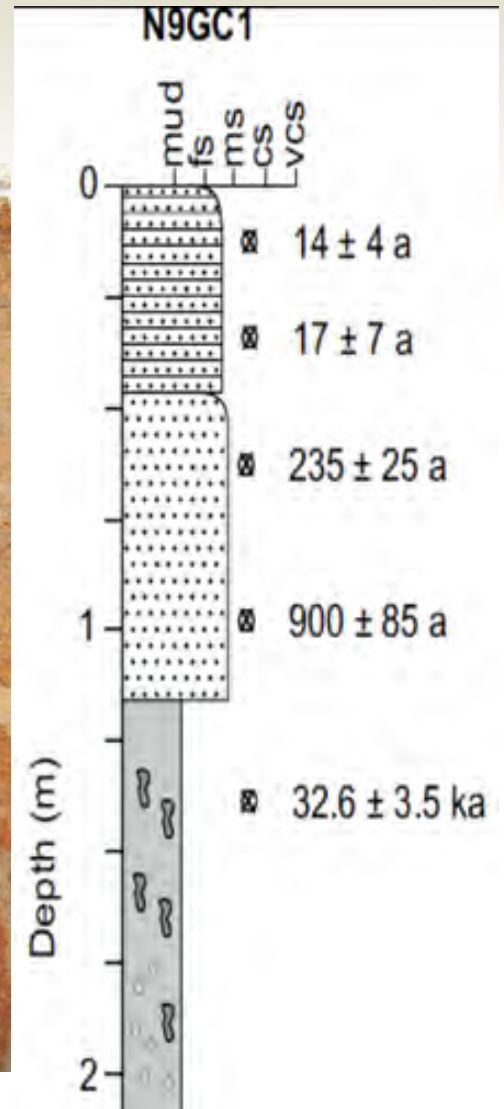




2 The role of in-channel benches as major stores of suspended sediment in the Normanby
5 catchment & implications for catchment management



2 The role of in-channel benches as major stores of suspended sediment in the Normanby
6 catchment & implications for catchment management





In-channel benches are storing in excess of 400 kt of fine sediment per year

Last